

HEALTH IN YOUR HANDS



eMedica

Innovative monitoring and treatment approaches on a single platform, integrating IOT and AI coupled to a cloud server.

Innovative techniques of treating blood illnesses by restoring cell voltage with ideal frequency for each therapy and maintaining optimal blood temperature for natural healing.



eMedica - Key Features

eMedica is an electronic medical gadget that adjusts the human body's electro-magnetic frequency to its optimal level. It produces a precise frequency, voltages, and current combinations to heal the ailment targeted within the human body.

The World of Frequencies:

Every disease and virus have its own ideal frequency, and eMedica uses frequencies that are specific to diseases.

Enhances your cell charge

It also enhances your blood cell's charge. When you are sick, the first thing that changes in your body is the potential of your cells. The potential of a person's cell decreases the moment they become ill from any sickness. eMedica boosts each cell's membrane potential by boosting the immune system.

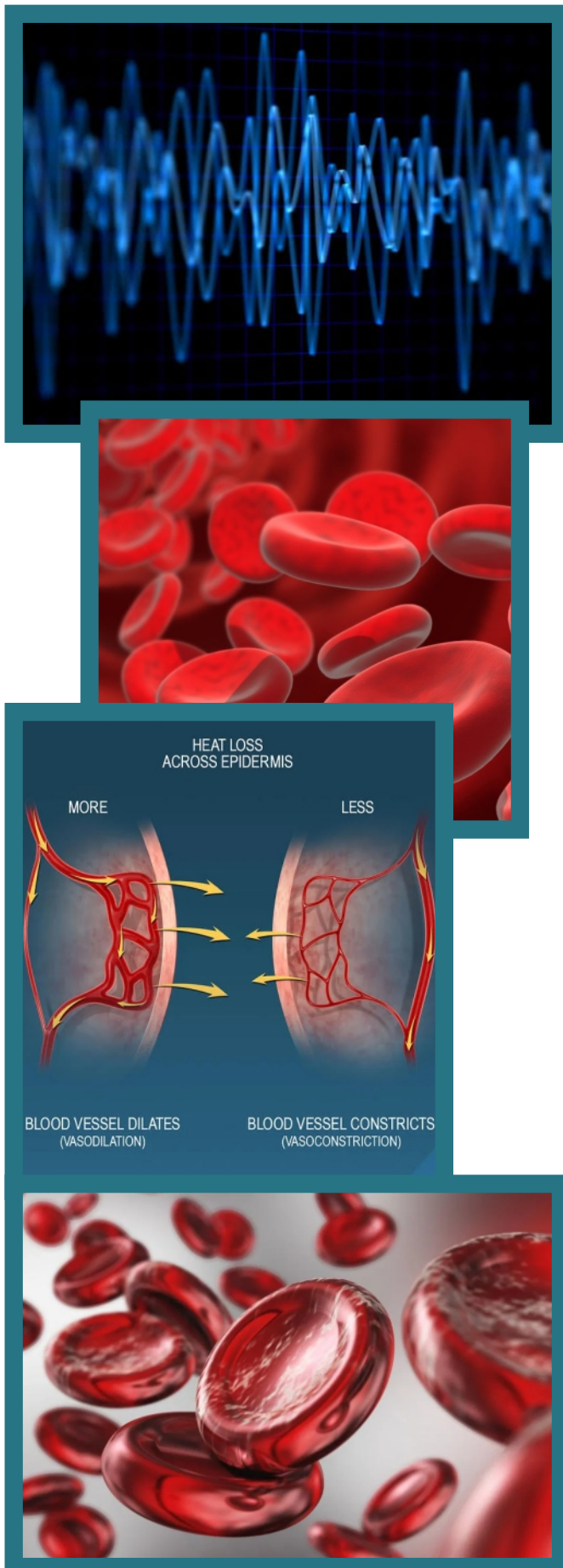
Regulates your blood temperature

eMedica raises the blood temperature to the ideal range. Fever helps immune cells move along blood vessels, which helps them fight infection. The temperature of these cells was raised from 37°C to X°C, which is the typical mouse body temperature. The technique could aid in the discovery of human organ functions in both health and illness.

Balances your pH

The pH of blood cells is improved by using eMedica. The pH level of the blood rises as the cell charge levels rises, making the blood more alkaline.

Negative ions are also delivered through eMedica as well (electrons). When a person becomes ill or becomes infected with a disease or virus, the blood becomes ionised, releasing negative electrons. We can use the eMedica wellness device to deionize blood.





Improves the blood cell voltage



Works on optimal frequency



Increasing the blood temperature to its optimal level.



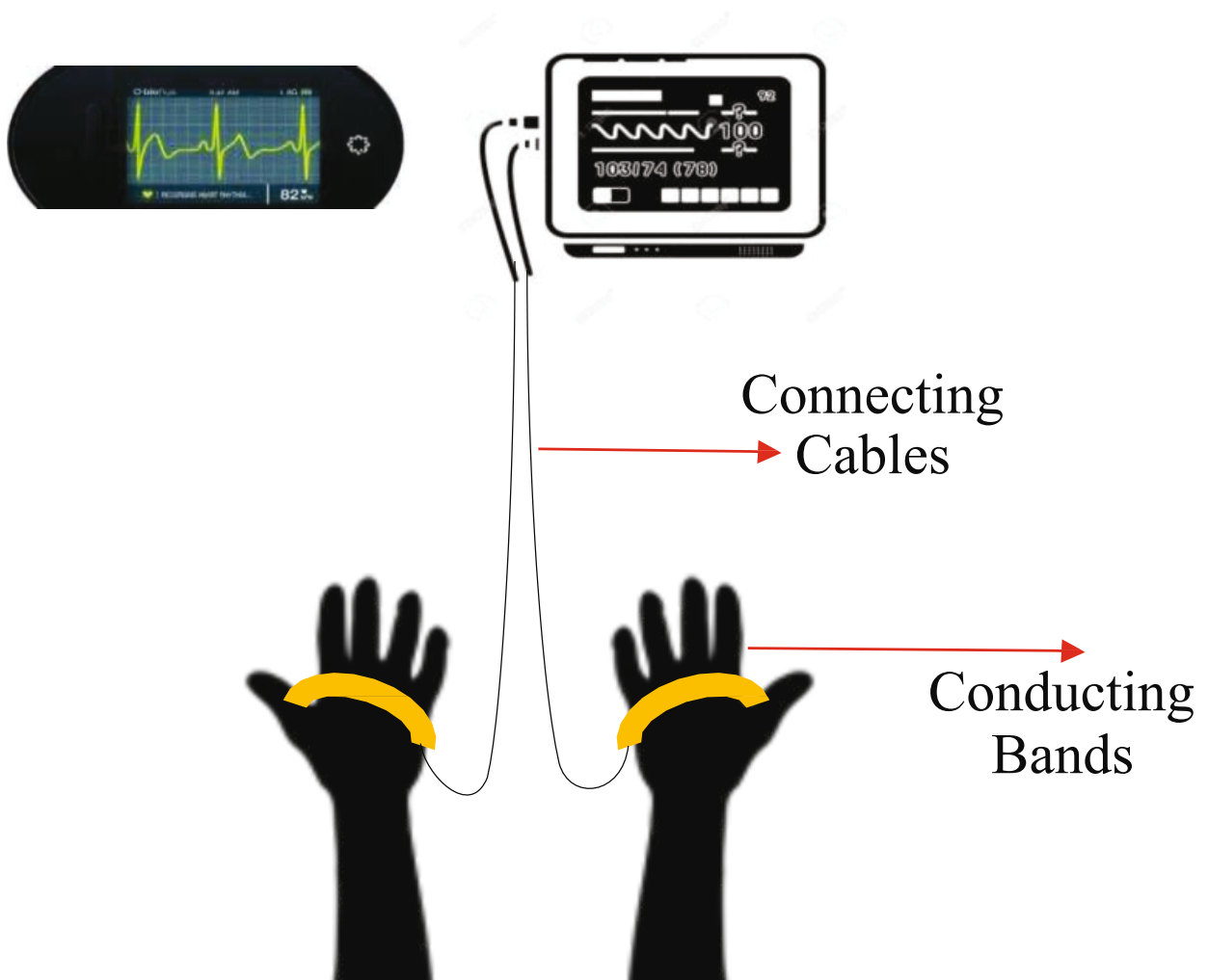
eMedica – What it is

eMedica is a one-of-a-kind, cutting-edge, smart, drug-free micro medical therapeutic device that combines several alternative therapies on a single platform to treat illnesses, particular problems, and a variety of medical treatments with the right operating system. The device is wearable and portable, and it can be made as large as a hospital bed.

The eMedica gadget, which is connected with IOT and an intelligent decision support system, can monitor a person's health in real time. The physician or the

registered hospital/caretaker will receive an alert notification in the event of an emergency. The concerned doctor can use the IOT platform to remotely monitor their patients in severe condition as well as do normal checkups.

The technology can connect to the hospital's patient management and health records system. It is also proposed that a back office be built and run utilising robotic process automation to monitor patients around the clock.



e Medica - Basics

Neuronal communication is based on two factors. One of them is an electrical voltage across the membrane known as the Resting Membrane Potential (RMP). Because the inside of a cell is negative in comparison to the exterior, a voltage is created across the membrane. In the body, the voltage across the plasma membrane of cells is normally between -20 and -200 millivolts (mV). The negative sign denotes a negative relationship between the inside and the exterior.

The voltage is proportional to the magnitude of the charge differential across the membrane. Nerve cells have a resting membrane potential (RMP) of 50 to 90 millivolts. The most commonly used value is 70 mV, which indicates that the membrane is polarized.

Ion channels convey the majority of the current flow across the membrane. The distribution of ions across the plasma membrane and the relative permeability of the membrane to Na (Sodium) and K (Potassium) are two factors that influence the Resting Membrane Potential (Potassium). When the Na that diffuses in is pumped out and the K that diffuses out is pushed back in, this voltage is established.

Two voltage-gated ion channels, one for Na and one for K, open and close when an action potential occurs.

Depolarization occurs when the voltage-gated Na channel opens. Repolarization is caused by the opening of the K(Potassium) voltage-gated channels and the shutting of the Na(Sodium) voltage-gated channels. Both of these processes take only a few milliseconds to complete. The internal voltage of the cell rises from its resting potential (-70 mV) to a positive value during an action potential. It quickly returns to its resting potential, though.

Your cells' normal resting state is negativity. It has to do with a tiny imbalance of potassium and sodium ions within and outside the cell, which sets the stage for your electrical capacity. Your cell membranes use a technique known as the sodium-potassium gate.

It's a complicated system, but the following is a short explanation of how these gates generate electrical charges: Your cells have more potassium ions within than sodium ions at rest, while sodium ions are more abundant outside the cell. Because potassium ions are negative, a cell inside has a tiny negative charge. The area immediately outside the cell membrane is positive because sodium ions are positive. In this resting state, however, there isn't a strong enough charge differential



How does Voltage Benefits Human body Could Correcting Voltage Be The Answer To Curing Disease

The body opens the gate when it needs to send a message from one spot to another. Sodium and potassium ions move freely in and out of the cell when the membrane gate opens. Positively charged sodium ions enter the cell, traveling toward the negative charge, while negatively charged potassium ions exit the cell, attracted to the positivity beyond the membrane. As a result, the concentrations of the two types of ions change, and the charge changes quickly. It's similar to flipping from 1 to 0. An electrical impulse is generated when the positive and negative poles are switched. This impulse causes the following cell's gate to open, causing another charge, and so on. An electrical impulse travel from a nerve in your stubbed toe to the pain-sensing region of your brain in this manner.

Is it possible that adjusting cell voltage could be the key to curing disease?

Isn't this an intriguing question?

However, it's more than just a question to ponder. There is no activity in your body that does not include an electrical charge. The presence of the right voltage is required to promote neurotransmission, cell repair, detoxification, and oxygenation/gas exchange. We may argue, to highlight our pervasive reliance on voltage, Thanks to the tireless labour of researchers over the past 100 years. We now know for sure that a healthy human cell runs at a voltage of -25 millivolts, and that the voltage must be boosted to -50 millivolts of energy to generate a new cell or repair a damaged cell, Making new cells, of course, necessitates the availability of all raw materials (nutrients) needed to create new cells, as well as the elimination of all things that destroy cells as quickly as possible. We all know how important alkalinity is, but did you know that the pH (potential hydrogen) or acid/alkaline balance is precisely proportional to voltage?



Electron Stealer	Electron Donor
Causes Damage	Can Do Work
pH 0-6.9	pH 7.1-14
Acidic	Alkaline
Free Radical	Antioxidant
Positive Pole	Negative Pole
Destructive	Constructive
Spine Left	Spine Right

We now know a direct correlation between Voltage and pH because to the efforts of people like Tesla and Tennant. For example, the pH of the blood must be preserved between 7.35-7.45, which is equivalent to a voltage of -20 to -25 millivolts (as you can see on the chart below). A movement of electrons characterizes an electrical current. Copper wires, which act as conductors in your home, convey this flow of electrons. When a circuit's switch is turned on, electrons flow around, which is reflected in power, energy, and voltage. A donation of electrons causes the light to turn "ON." If the circuit's switch is turned off, no electrons are moving, and hence no power or voltage is produced.

It's a distinct environment in the human body, one that's always moist in solution. An electron donor (alkaline pH) or an electron stealer (acidic pH) can be found in a solution (acidic pH). While most people are unfamiliar with terminology like electron donor and electron stealer, if a voltage is detected with a sophisticated equipment, it can readily be transformed to a logarithmic scale called pH. Most people are familiar with this scale of measurement. Now that we've established that both phrases can be used interchangeably, let's look at some examples of donors and stealers in relation to the human body.

Treating Cancer with Electrons

Lack of oxygen is a key driver of cancer growth then so is low CO₂, pH and depressed cell voltage.



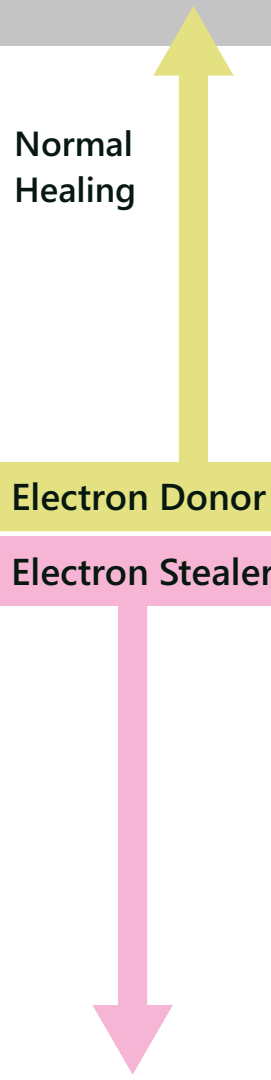
A free radical is an electron-deficient molecule that seeks out healthy cells to take electrons. The process of stealing electrons damages or severely degrades the function of the cell from which the electrons were stolen. An antioxidant, on the other hand, is a chemical that may give or donate electrons, rendering formerly volatile and dangerous cells safe. Symptoms begin to occur when the voltage of your cell drops below -20 millivolts, as shown in the diagram above. The illness process is indicated by a lower negative millivolt measurement or a higher positive millivolt reading. It has been demonstrated that below +30 millivolts, DNA damage occurs and cancer growth begins at the cellular level.

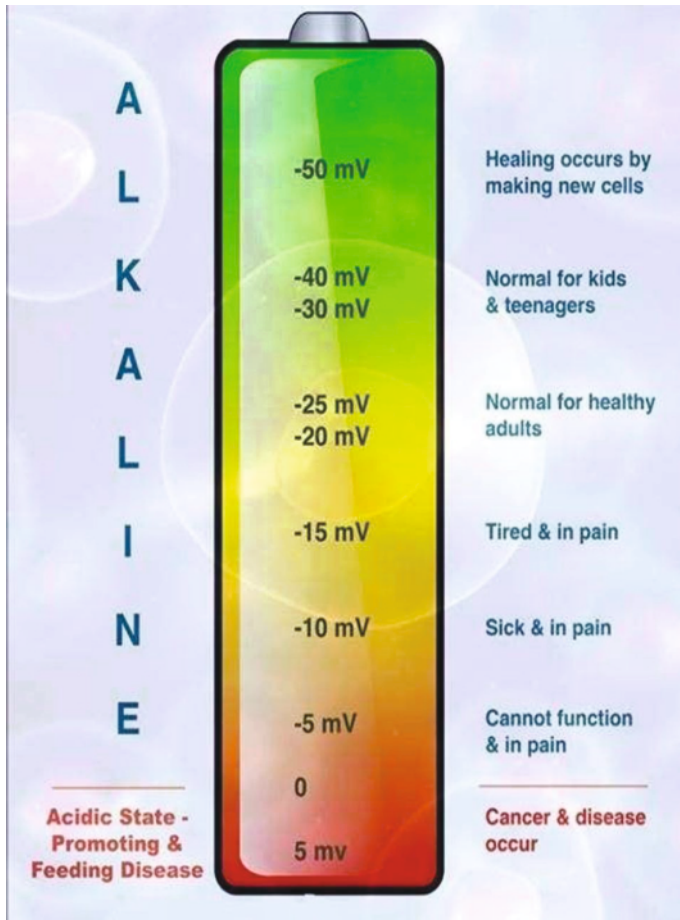
Now that we know how important it is to keep our cells at a healthy -25 millivolts, the next logical question is, "How do we impact the voltage of our cells?" I'm sure you're all checking to see if your cells are fully charged at this point. As previously stated in this article, certain dietary and lifestyle factors can be used to ensure that the new cells that work in production processes are primed properly. Here's a rundown of the things that have an impact. Your body, like a battery, cannot function if its cells lose their charge. Your cells' battery will be charged by eMedica therapy, allowing them to get to work on restoring your health.

Cell Values

Values are Approximate

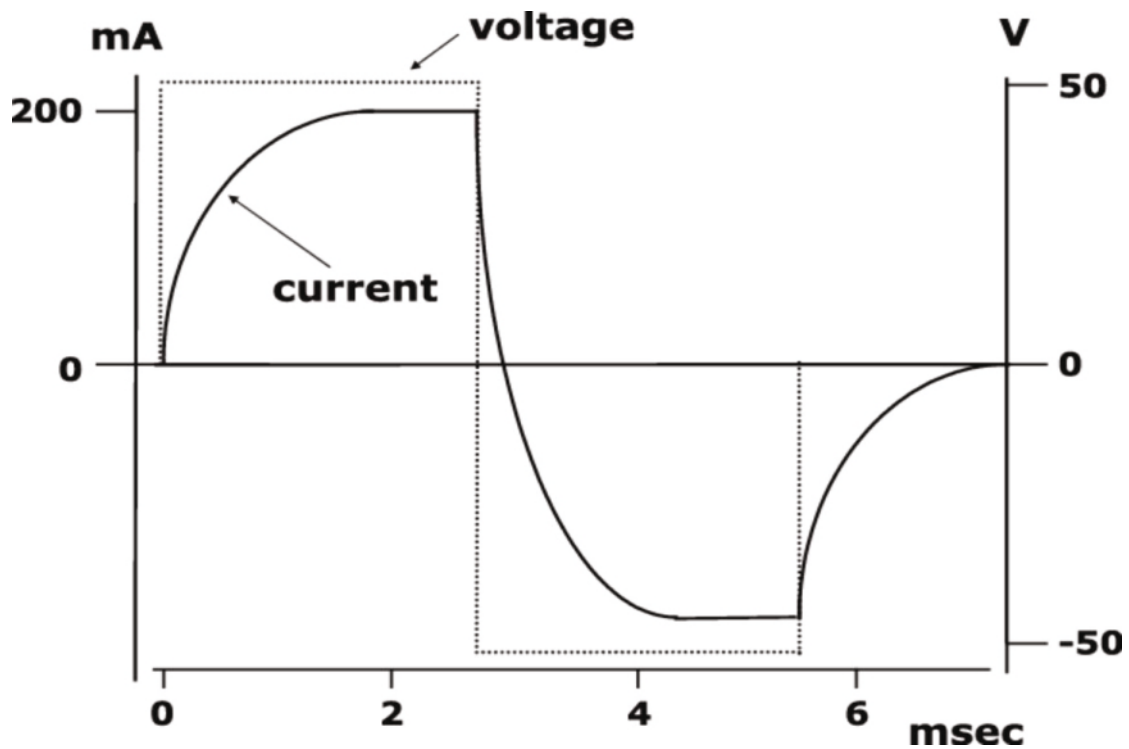
Nakatani	Cell Voltage	Cell pH	Salivary pH Cell	Cell pH	Cell Voltage	Symptoms
210	-105	8.84	8.04	Viruses Bacteria Fungus Cancer Cells Die at 7.8-8.8	-105	Symptoms of Healing
200	-100	8.75	7.95		-100	
190	-95	8.66	7.86		-95	
180	-90	8.58	7.78		-90	
170	-85	8.49	7.69		-85	
160	-80	8.40	7.60		-80	
150	-75	8.31	7.51		-75	
140	-70	8.23	7.43		-70	
130	-65	8.14	7.34		-65	
120	-60	8.05	7.25		-65	
110	-55	7.96	7.16	-55		
100	-50	7.88	7.08	-50		
90	-45	7.79	6.99	-45		
80	-40	7.70	6.90	-40		
70	-35	7.61	6.81	-35		
60	-30	7.53	6.73	-30		
50	-25	7.44	6.64	-25	Operating Voltage	
40	-20	7.35	6.55	-20		
30	-15	7.26	6.46	-15	Tired Sick Organ fallure	
20	-10	7.18	6.38	-10		
10	-5	7.09	6.29	-5	Change Polarity	
0	0	7.00	6.20	0		
	5	6.91	6.11	5	Pain Docroanand Oxygen Viral Intections Bacterial Intections Fungal Intections Damage DNS = Cancer	
	10	6.83	6.03	10		
	15	6.74	5.94	15		
	20	6.65	5.85	20		
	25	6.56	5.76	25	Cancer +30	
	30	6.48	5.68	30		
	35	6.39	5.59	35		
	40	6.30	5.50	40		
	45	6.21	5.41	45		
	50	6.13	5.33	50		
	55	6.04	5.24	55		
	60	5.95	5.15	60		
		5.86	5.06	65		





Like a battery;

When your cells lose their charge, your body can't operate correctly, just like a battery. eMedica therapy recharges your cells so they can get back to work restoring your health and vitality.

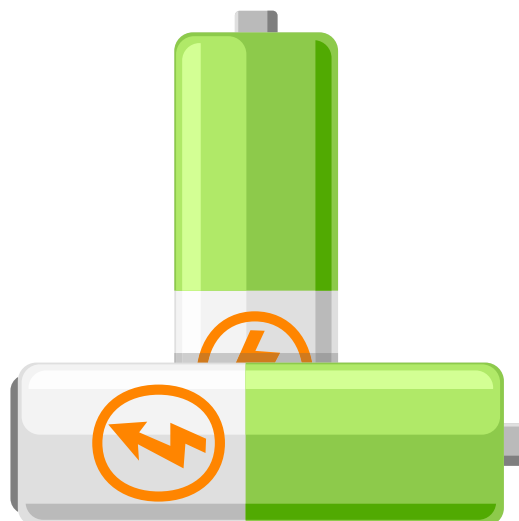


How Do Cells Normally Get Voltage?

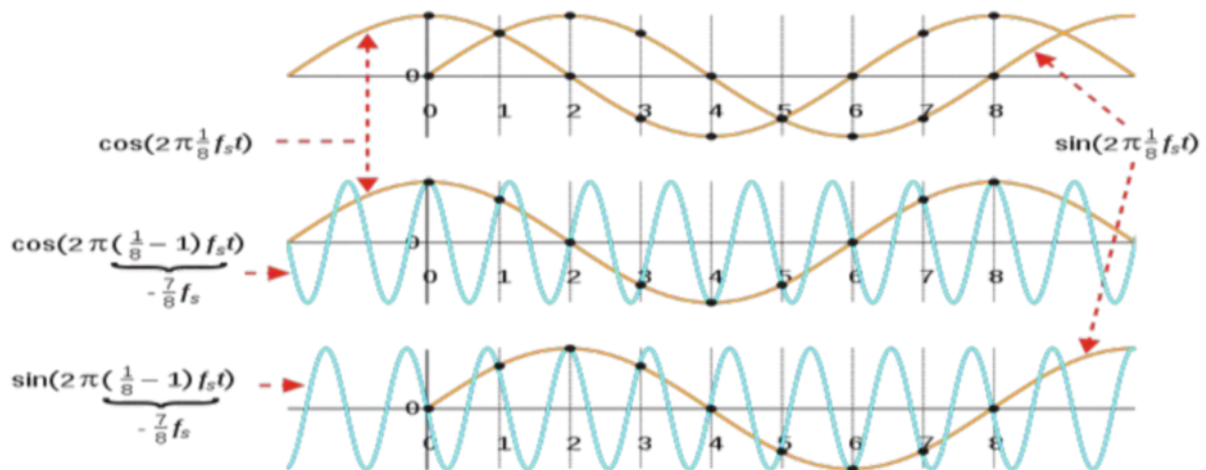
The hazardous atmosphere of the twenty-first century poses a significant concern. The flow of electrons (voltage) will always be from a high voltage area to a low voltage area. Because the earth is a large electromagnet, you can take up the voltage simply by walking or standing barefoot on sand, grass, or soil. You can raise your voltage by eating solely unprocessed foods with a high vegetable content. Your voltage rises when you eat exclusively unprocessed foods with a high percentage of vegetable matter. Swimming in the ocean or a moving stream increases your voltage even more. Electrons flow from high to low when two living objects come into contact. As a result, contacting your healthy pet or trees will produce a voltage shift in your energy system. Importantly, your muscles generate electrons through the piezoelectric effect when you exercise. Exercise is a primary source of electrons for your body, as your muscles are rechargeable batteries. These electrons are subsequently sent to your organs and cells through three different routes.

- The first is the Perineal Nervous System, which is a wiring system.
- The Acupuncture Meridian System is the second method.
- The third method involves ionically transferring electrons through The Blood.

Your cell membranes serve as "battery packs" for your cells since capacitors are designed to store electrons. Your skeletal muscles, or 'Muscle Battery Packs,' are the other part, as previously explained. Through the acupuncture system, these muscular battery packs deliver power to various organs and glands. The body's face plans are followed by the acupuncture system. The fascia tissue in your body is of a sort that has reduced resistance, allowing for a smooth transfer and delivery of electrons to the meridian/ corresponding circuit's organs!



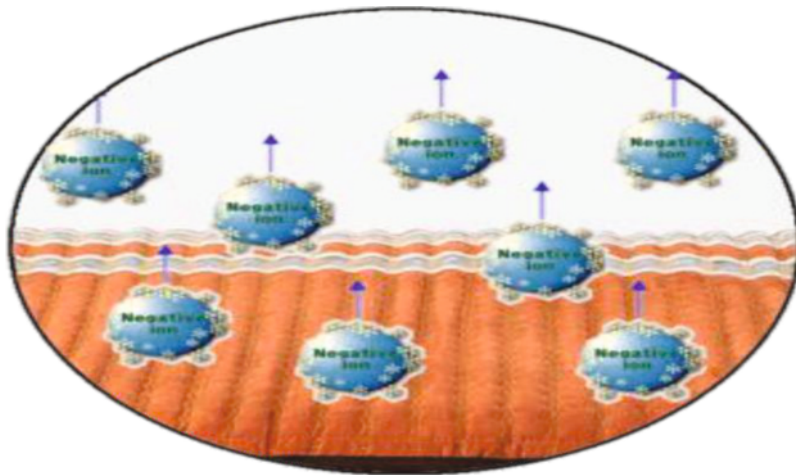
Frequency benefits on human health



The world of frequencies: Every disease and virus have a frequency that works best for them. We are all part of the system since we live in a world of frequencies and vibrations, or energy. Every cell in our body vibrates at its own frequency. When everything is in order, the best frequency is used. Our vibration is in sync with the law of vibration when we are in harmony. There is no effort or conflict when we are in tune and each cell of our body vibrates at the frequency it was made to. Animals, plants, and water are all made up of atoms that produce, emit, and receive energy at a certain frequency. As do allergens, viruses, bacteria, and fungi, everything, including our tissues, cells, organs, emotions, and thought patterns, has its own electromagnetic field. *Imbalances that reside in our bodies and minds can be detectable and reduced via the correction of their particular electro-magnetic fields, through the means of biofeedback*



Benefits of Negative Electrons

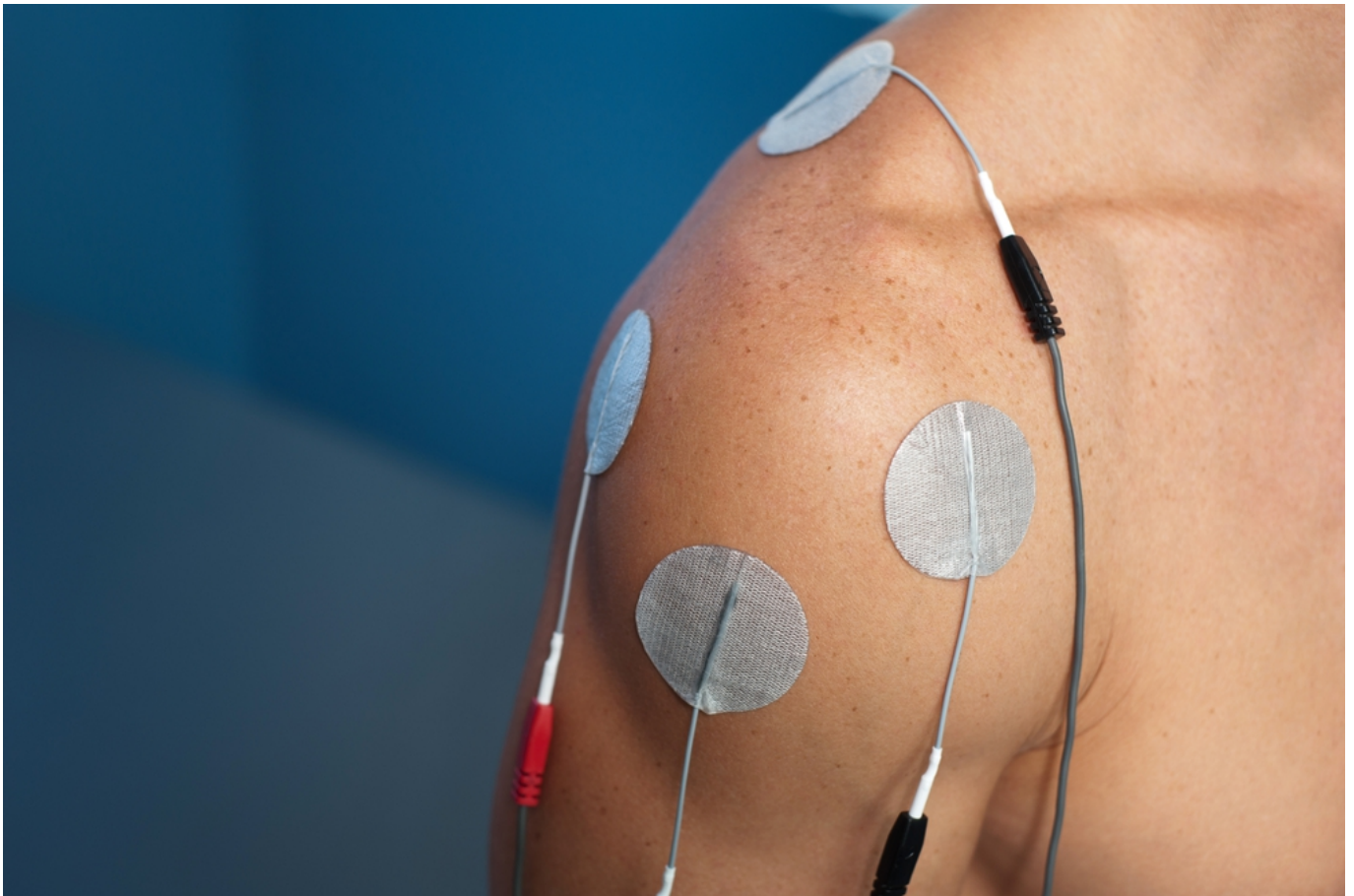


Airborne toxins and allergens are typically within the positive ion category, the usual meaning of 'positive' not applying in this case. The more positive ions there are within a living space, the greater the chance of illness or un-wellness occurring in that same space. The only way to eliminate a positive ion is for a negative ion to attract to it and neutralize the atom. Once the charge of the overall allergen or toxin molecule is neutralized by the addition of a negative ion, the magnetic forces in the air

no longer have any effect and the harmful molecule will drop to the ground. Once this happens, we no longer have any fear of inhaling this particular positive ion toxin or allergen because it is no longer airborne.

Negative ion therapy is a proven method of an overall reduction in the percentage of positive ions in your body. A normalized level of serotonin will not only lead to happier moods but better sleep as well.

Interferential Current Therapy

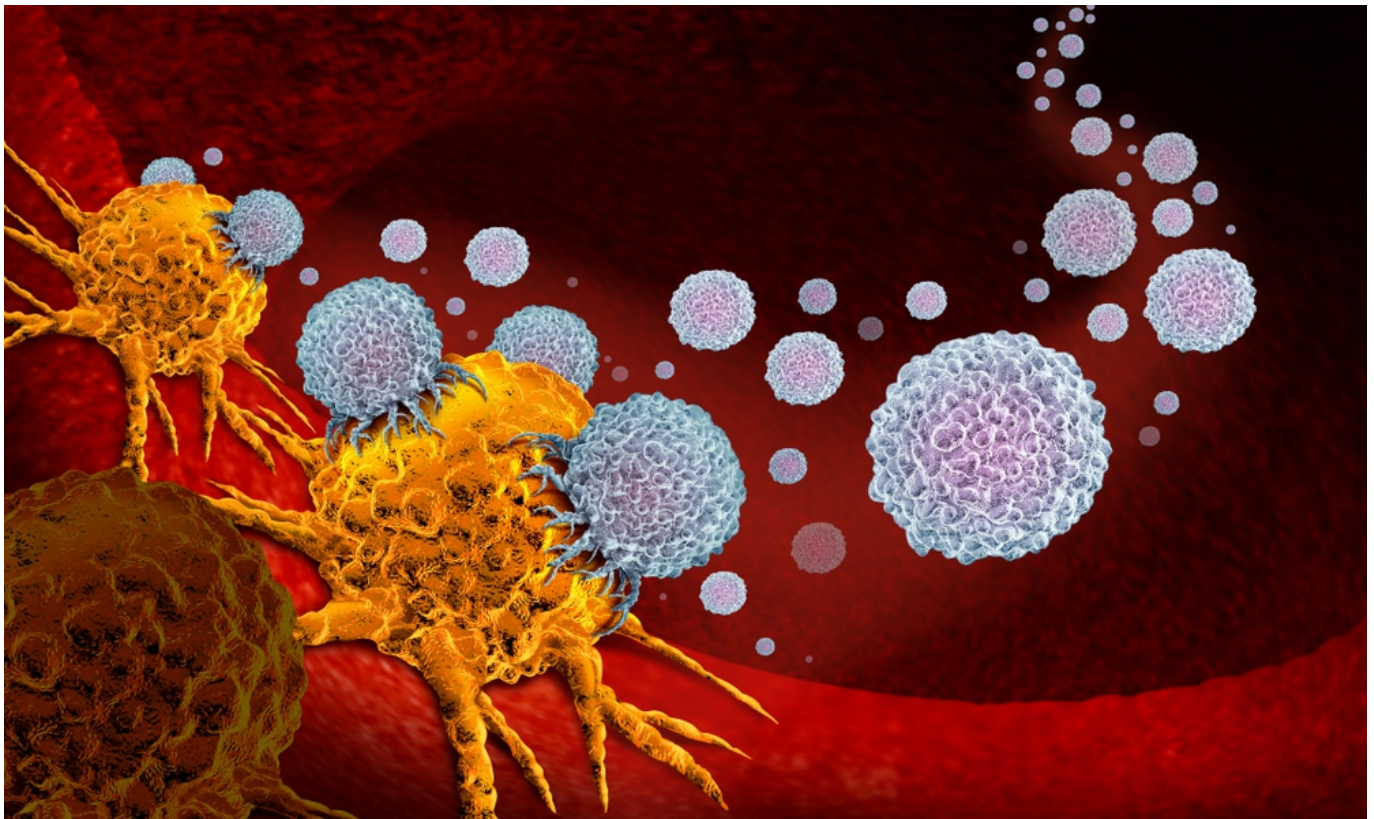


Interferential Current Therapy is used for pain relief, soft tissue healing, and the reduction of swelling. This therapy uses low-frequency electrical charges and when this electricity reaches the affected tissue (by electrodes), and as a response endorphins are released. The electric current is a flow of charged (positively or negatively) particles between a conductive medium.

Good conductive mediums are the ones that have free-charged particles (electrons or ions) because that characteristic allows an electric current to pass through them. The human body is an example of a good conductive medium (due to the high percentage of water and the presence of Cl^- and Na^+ ions).

Benefits of Temperature rise In Blood

Killing Cancer Cells & Diminishing Pain Quickly with Heat



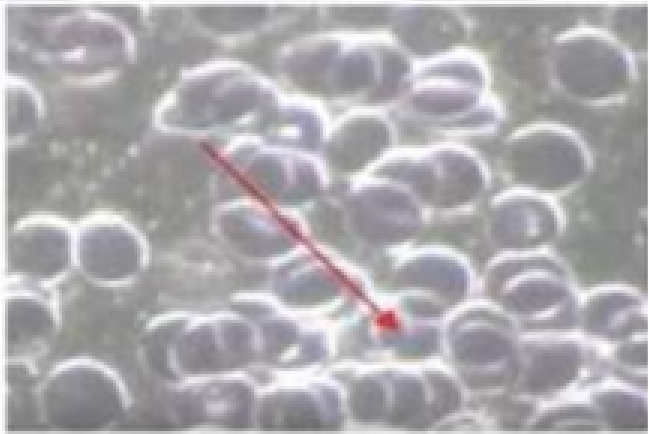
- Killing Cancer Cells & Diminishing Pain Quickly with Heat when your body temperature rises because of an infection, it's called a fever. Fevers are caused by chemicals called pyrogens flowing in the bloodstream. One purpose of a fever is thought to be to raise the body's temperature enough to kill off certain bacteria and viruses sensitive to temperature changes.

- A fever fights infection by helping immune cells to crawl along the blood-vessel. The temperature of these cells from the normal mouse body temperature of 37°C to X°C. The method could help to reveal human organ functions in health and disease.

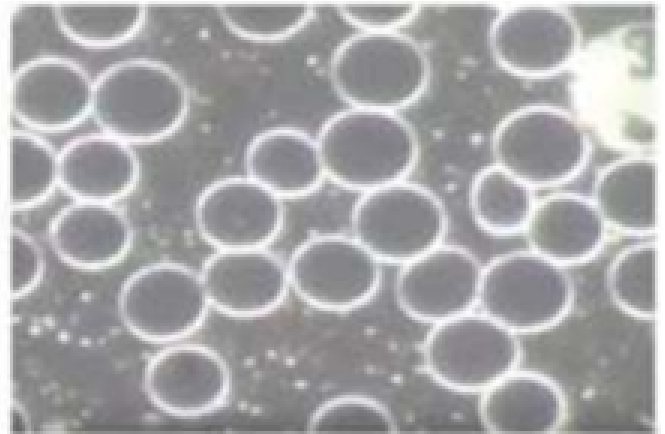
- Hyperthermia (also called thermal therapy or thermotherapy) is a type of cancer treatment in which body tissue is exposed to high temperatures. Research has shown that high temperatures can damage and kill cancer cells, usually with minimal injury to normal tissues. Many studies have shown a significant reduction in tumor size when hyperthermia is combined with other treatments.

- eMedica increases the blood temperature to its optimal levels by the flow of electric current within the human body and using its heating pads attached to the device which helps the body to fight against Viruses and Bacteria.

Darkfield Microscopy

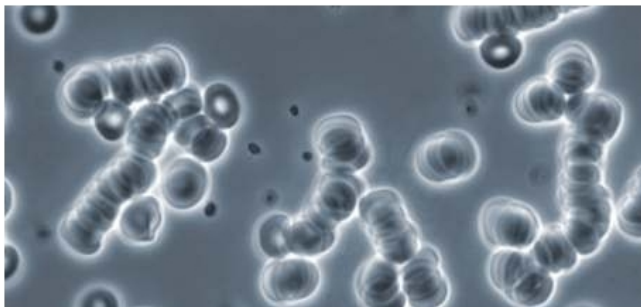


1. Blood cells clumping before usage of eMedica



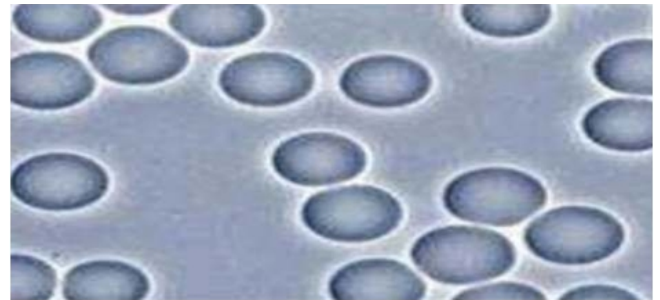
2. Blood cells after the usage of eMedica

Clump red blood cells



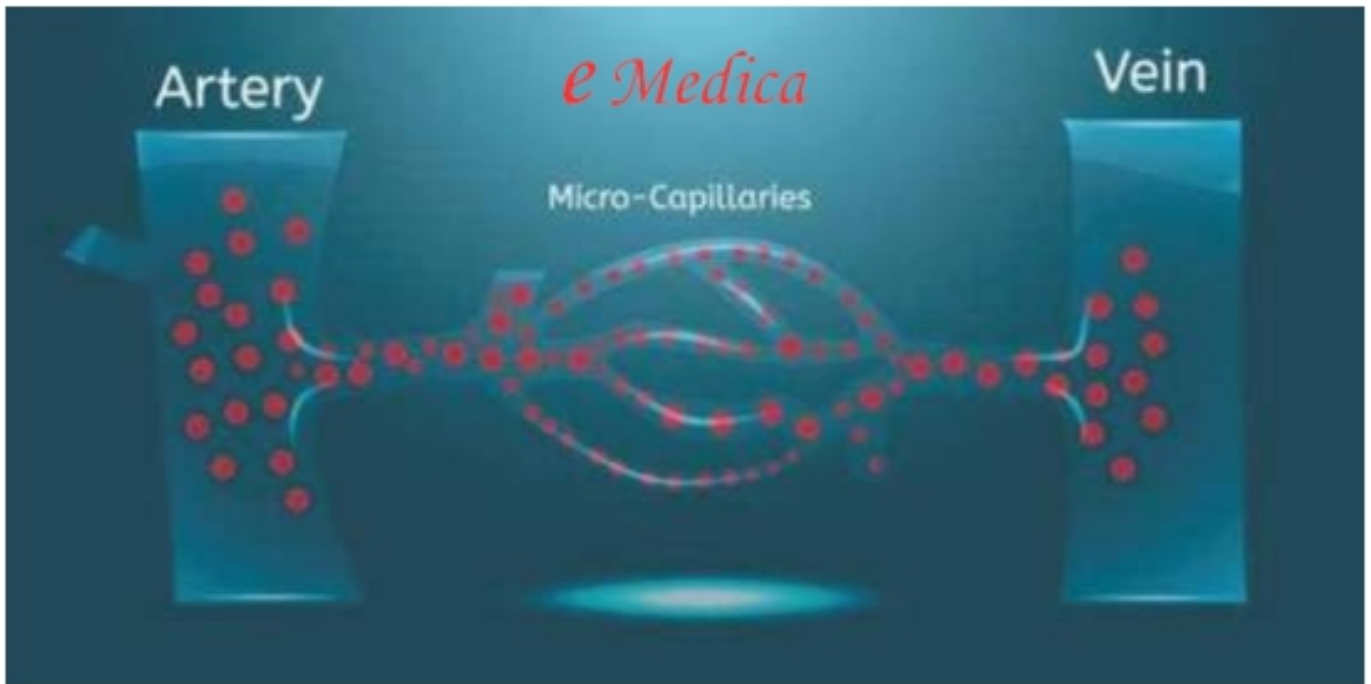
- Decreases oxygen delivery
- Decreases nutrients delivery
- Decreases circulation
- Increases plaque build-up
- Increases load on heart

Separated blood cell



- Increases oxygen delivery
- Increases nutrient delivery
- Increases circulation
- Decreases plaque build up
- Decreases load on heart

Darkfield Microscopy

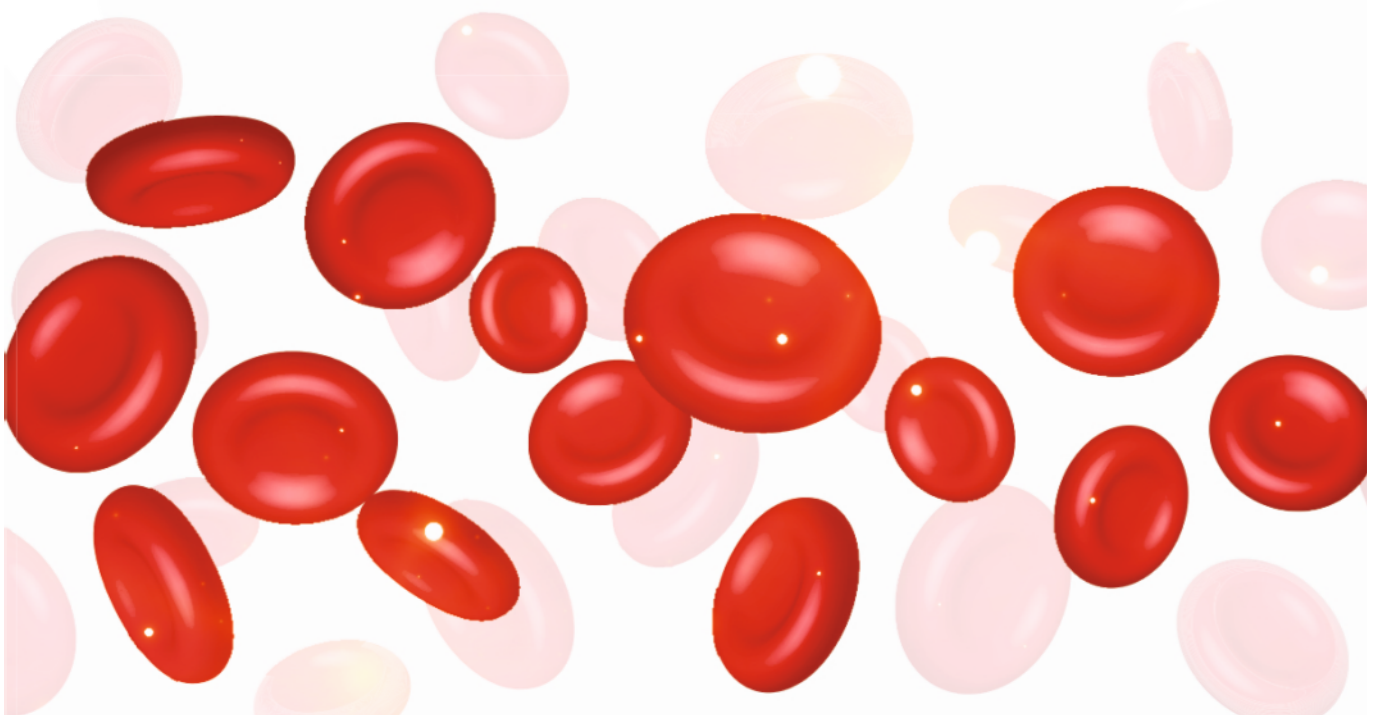


With daily use of eMedica, eMedica therapy enhances micro circulation for better health. It also improves flow in those with the chronic conditions like atherosclerosis and diabetes. Common symptoms of poor circulation include numbness, pain or tingling in the extremities, cold hands and feet, fatigue, and inflammation.

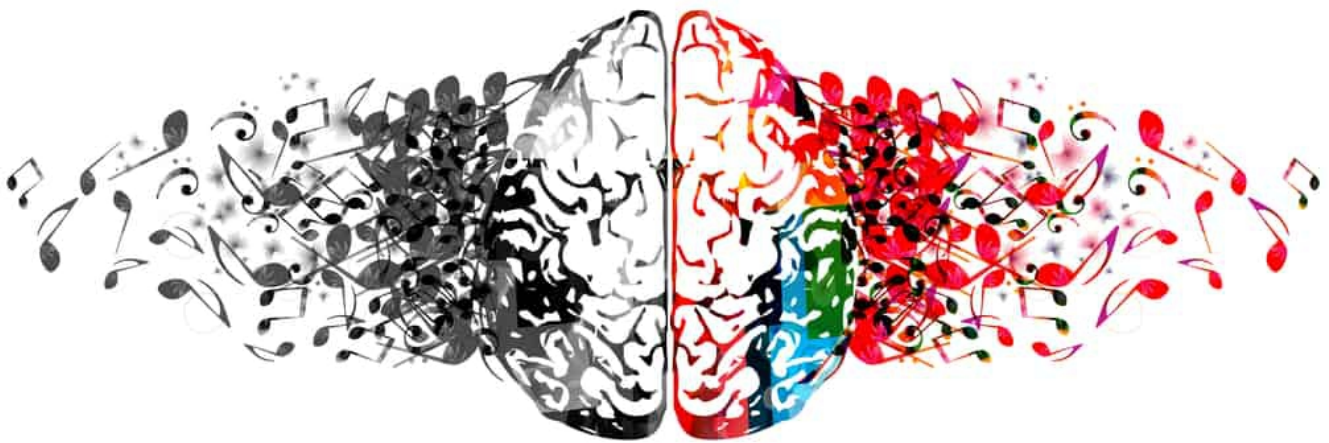


HOW DOES eMedica THERAPY IMPROVE CIRCULATION

- eMedica therapy, combined with proper hydration and nutrition, is a way to improve circulation for a healthier body. Other ways to improve circulation are to exercise regularly and stay active.
- Reduces inflammation that restricts blood flow.
- Provides energy to the cells that keeps them from clumping together dilates micro-capillaries for improved blood flow.
- Micro- capillaries are the small blood vessels that connect arteries to veins. They are so small that the blood cells have to flow single file through them.
- Oxygen rich red blood cells carry oxygen and nutrients through the arteries, to the capillaries, and to all the organs of the body. As the blood provides oxygen and nutrients to the cells, the micro-capillaries carry waste products to the veins for their disposal.
- Improved circulation catalyzes improved blood flow to hands, fingers, legs, feet, arms, and toes. Thermography is a tool commonly used to visually assess circulation.



MUSIC THERAPY

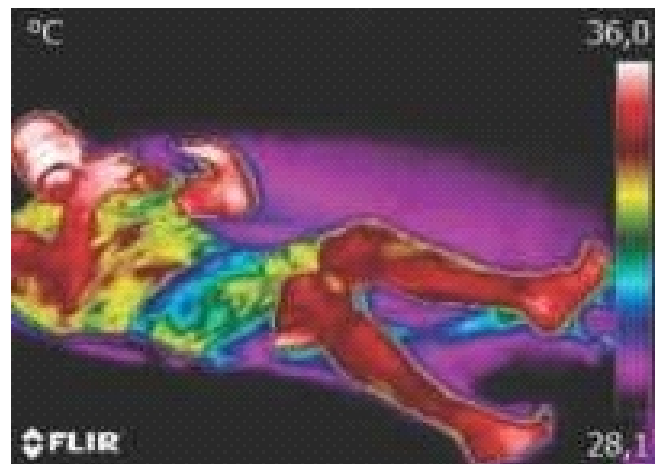
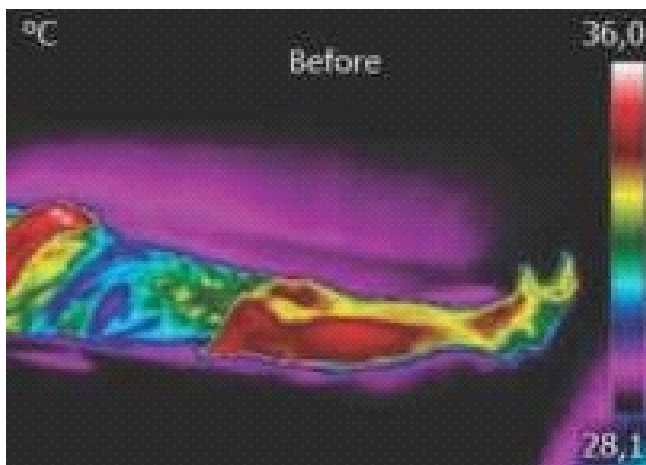


eMedica music therapy has been tested in patients ranging from those with intense acute pain to those with chronic pain from arthritis. Overall, music therapy decreases pain perception, reduces the amount of pain medication needed, helps relieve depression, and gives people a sense of better control over their pain.

Music therapy is an evidence-based clinical use of musical interventions to improve health. This approach focuses on treatment through the creation of music by both therapist and client together. The yidaki produced sounds that are similar to the sound healing techniques used in the modern-day.

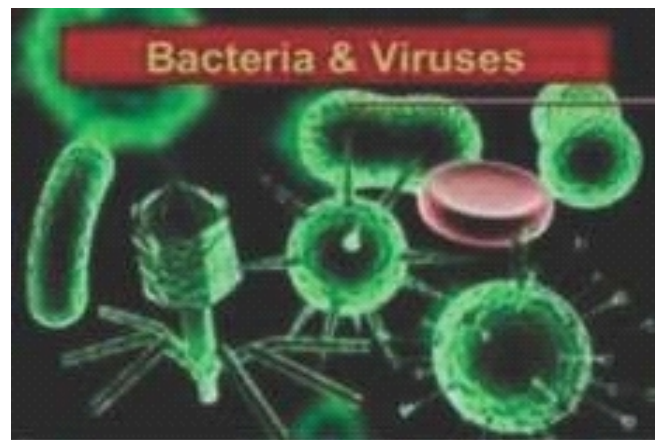
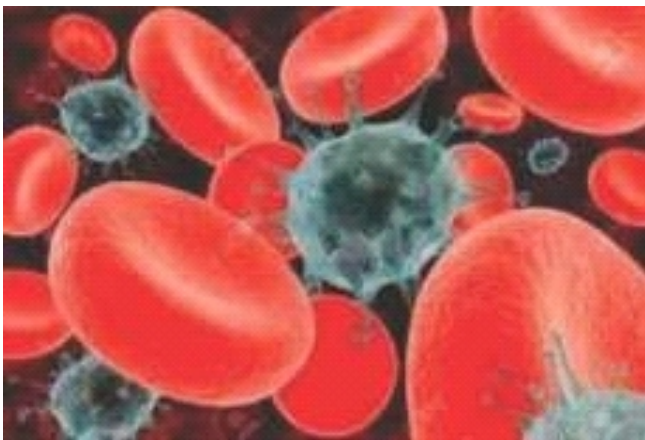
ASSESSING CIRCULATION

- Thermography uses an infrared camera to detect heat patterns and blood flow in body tissues.
- The thermography image below shows the temperature (blood flow) before eMedica therapy.
- The before image below (bottom left) shows the subject lying down on the Vasindux Pro mat.
- The areas on the legs and feet showing yellow green coloration indicate reduced blood flow.
- After a 15 minute eMedica therapy session using the Vasindux Pro Mat (bottom right), blood flow was greatly improved.
- The area previously shown in yellow and green have changed to red tones that indicate better circulation and improved blood flow.



HOW DOES eMedica THERAPY WORKS FOR BACTERIA & VIRUSES

eMedica Therapy



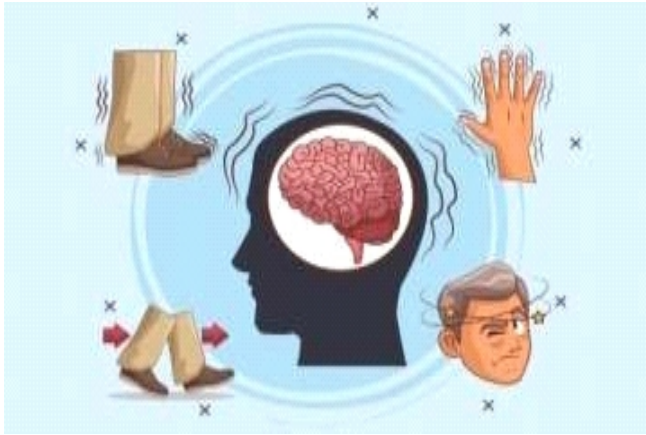
- eMedica has been found to reduce chronic, damaging inflammation. T cells are a major regulator of the inflammatory cascade.
- In bacterial infections, early infiltration of the affected tissues by white blood cells is followed by the arrival of T cells, which kill bacteria.
- Studies have demonstrated that extremely low-frequency from eMedica radiation facilitates the process of wound repair, particularly the infected wounds where bacteria or other microorganisms have colonized that cause either a delay in wound healing or deterioration of the wound when the circulation system is working, the lymphatic system can dispatch its resources to fight foreign substances present in the body such as viruses, bacteria, parasites, toxins or cancerous cells in the body. eMedica addresses all these areas by boosting the cells to do the job they were designed for.

DIABETES



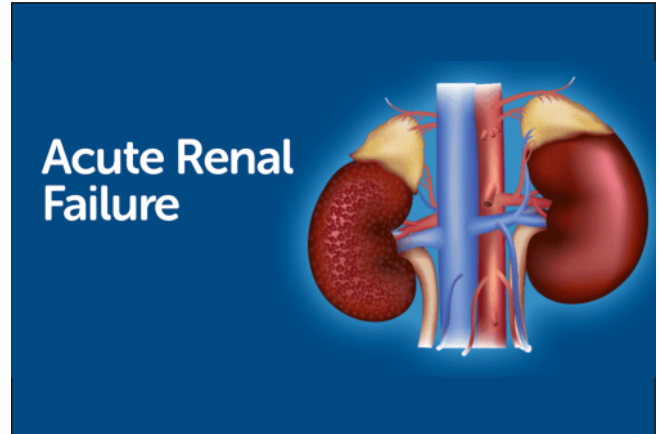
- Beta cells are the cells that make insulin, a hormone that controls the level of glucose (a type of sugar) in the blood. Beta cells are found in the pancreas within clusters of cells known as islets.
- eMedica improves the cell charge of Beta-cell.
- Which in turns improves the function of the organ to enhance the production of the insulin.
- The fat layer in the blood restricts the insulin to reach the cell which causes High blood sugar for Diabetic patient.
- eMedica burns the fat layer in the blood which helps the insulin to reach the cells, which helps to reduce the blood sugar level without the use of Chemicals.
- While using the eMedica burning fats in the blood reduces the thickness of the blood. Thick blood or hypercoagulability is a condition where the blood is thicker and stickier than usual. When a person has hypercoagulability, they are prone to blood clots.
- While stimulating your body through eMedica it improves blood circulation which in turn improves the overall health parameters in a Natural and Non Invasive way.

PARKINSON



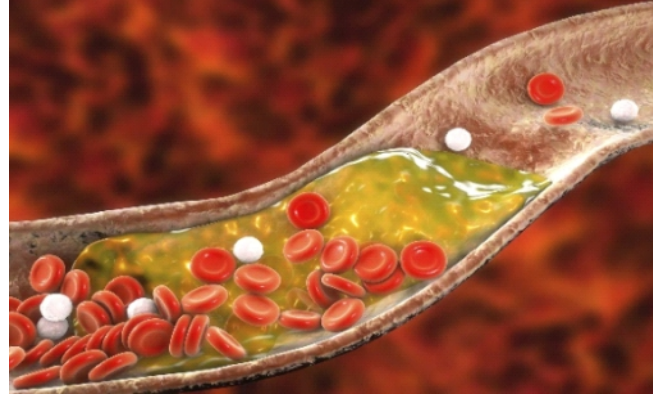
- A tremor, or shaking, usually begins in a limb, often your hand or fingers, Slowed movement (Bradykinesia) Rigid muscles, Impaired posture and balance, loss of automatic movements, Speech changes.
- Parkinson's disease is caused by a loss of nerve cells in the part of the brain called the Substantia Nigra. Nerve cells in this part of the brain are responsible for producing a chemical called dopamine.
- eMedica helps to enhance the charge of the Nerve cell, which in turn improves the health of the patient.

ACUTE KIDNEY FAILURE



- Acute kidney failure occurs when your kidneys suddenly become unable to filter waste products from your blood. When your kidneys lose their filtering ability, dangerous levels of wastes may accumulate, and your blood's chemical makeup may get out of balance.
- The renal corpuscle consists of a tuft of capillaries called a Glomerulus and an encompassing Bowman's capsule. The renal tubule extends from the capsule. The capsule and tubule are connected and are composed of epithelial cells with a lumen. A healthy adult has 1 to 1.5 million nephrons in each kidney.
- eMedica helps to enhance the Epithelial cell charge, which in turns improve the Kidney function, which also improves the Urine output of the patient gradually.

CHOLESTEROL



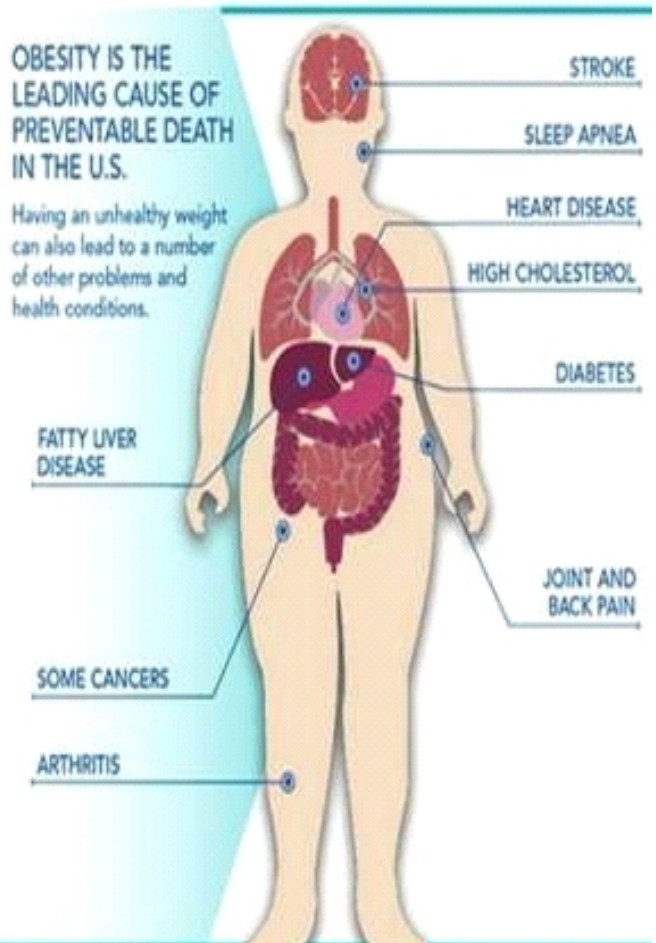
- Cholesterol is a waxy, whitish-yellow fat substance found in the bloodstream that helps to build healthy cells. The Cholesterol in the bloodstream comes from two sources : the liver and diet. The liver and intestines make 80% of the required cholesterol & 20% comes from foods you eat.
- Since cholesterol is fat, it can't travel alone in the bloodstream. Cholesterol and other lipids circulate in the bloodstream in several different forms. Of these, the one that gets the most attention is low-density lipoprotein (LDL), or "bad" cholesterol and high-density lipoprotein (HDL) particles are called "good" cholesterol because it picks up excess cholesterol and takes it back to your liver.
- High cholesterol can cause a dangerous accumulation of cholesterol and other deposits on the walls of your arteries (atherosclerosis). These deposits (plaques) can reduce blood flow through your arteries, which can cause complications, such as Heart attack, Chest pain, Stroke, etc.
- eMedica helps to burn the fats in your bloodstream, it also improves blood circulation and improves the cell charge of the blood cells which in turn maintains the cholesterol levels with the use of eMedica.
- With the use of eMedica it will help to burn the protein fat in the blood which in turn increase the vitamin level in the blood.

OBESITY

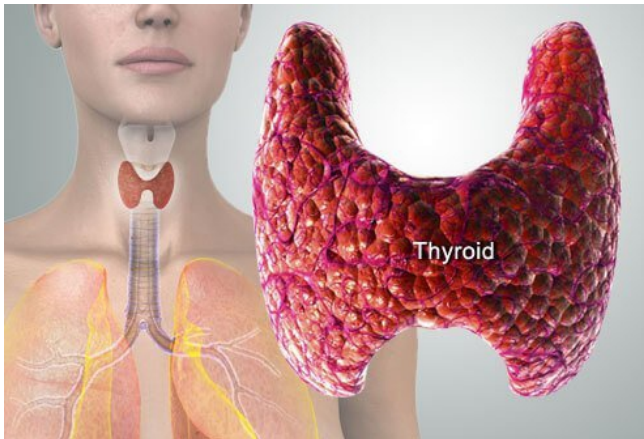
- Obesity is linked to the development of cardiovascular diseases, including atherosclerosis and hypertension, and an increased risk for heart failure (HF). Obesity has been shown to adversely affect the left ventricular structure, as well as systolic and diastolic function.
- eMedica helps to burn the fats in your blood, it also improves the blood circulation, and improves the cell charge of the blood cells. Which would help the user maintain the body weight, without exercise.
- The fat cells in the body gain fat through fat in the blood eMedica helps to burn the fat in the blood.



HOW OBESITY AFFECTS YOUR BODY

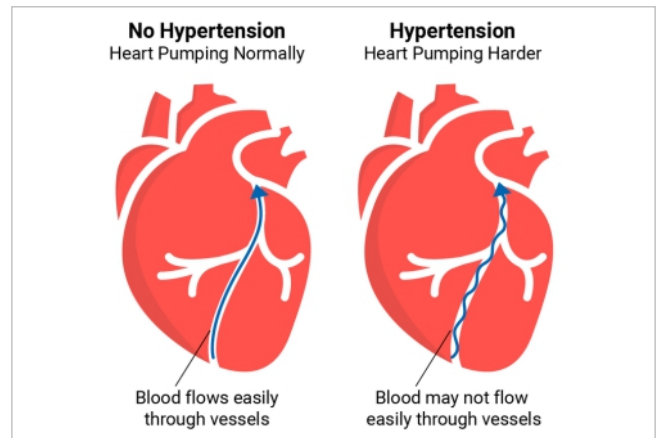


THYROID



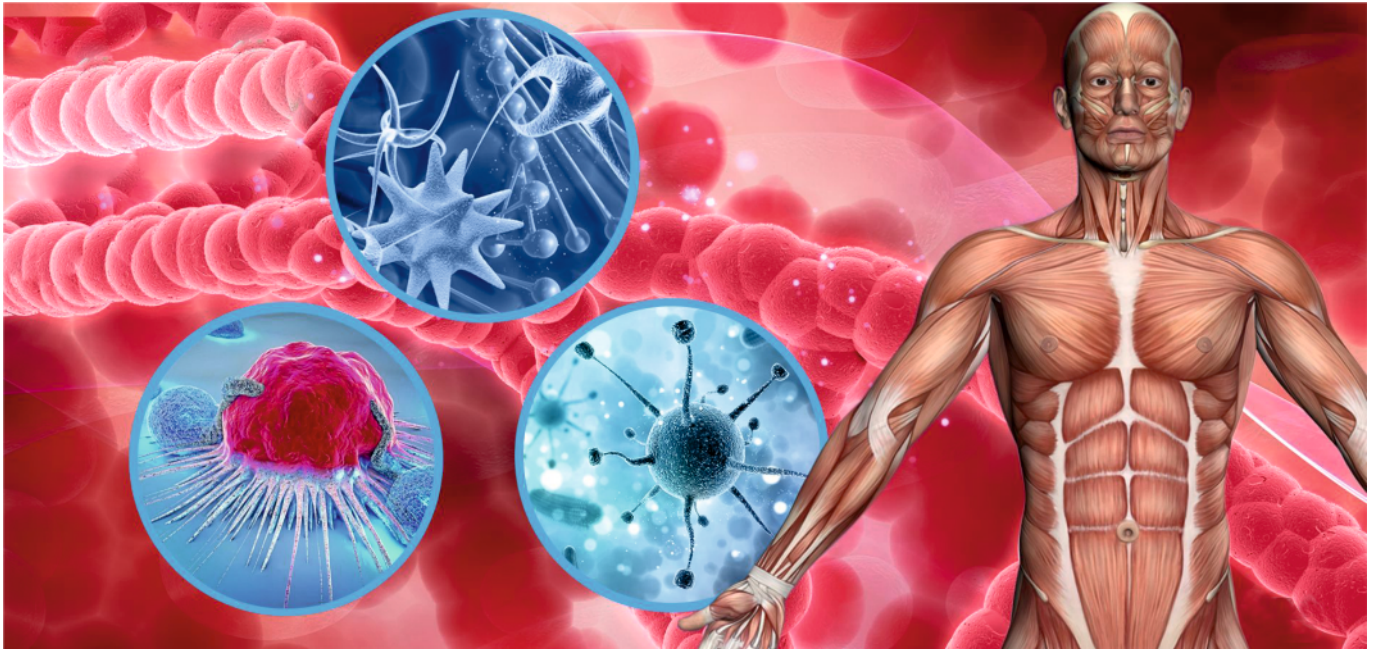
- HYPO OR HYPERTHYROIDISM is a clinical condition wherein the function of the Thyroid gland is disturbed.
- Thyroid has an important job to do within our body- Releasing and controlling thyroid hormones (T3 & T4) that control metabolism. Metabolism is a process where the food we take into our body is transformed into energy.
- The two main types of thyroid diseases are Hypothyroidism and Hyperthyroidism. Both conditions impact the way the Thyroid gland works and when the thyroid doesn't work properly, it can impact our entire body. eMedica reverts the morphology by correcting the dysfunction of the thyroid gland naturally by correcting the cell charge of the follicular cells within the thyroid gland which intends to improve functionality of the thyroid gland.

HYPERTENSION / HIGH BLOOD PRESSURE



- eMedica reverts back the morphology correcting the dysfunction of gland thus requiring very little medication which is for a lifetime.
- Hypertension is also known as High Blood Pressure (HBP), is a long term medical condition in which the blood pressure in the arteries is persistently elevated.
- The SBP (Systolic Blood Pressure) will be more than 140 mmHg and DBP (Diastolic Blood Pressure) will be more than or equal to 90mmHg.
- A high level of Blood Pressure can cause health conditions, such as Irregular Heartbeat, Chest Pain, Shortness of Breath, Stroke, Vomiting, Nausea, etc.
- eMedica helps to burn the fat in the blood which in turn smooths the blood flow and it supports to stabilize the blood pressure of the user.

CANCER



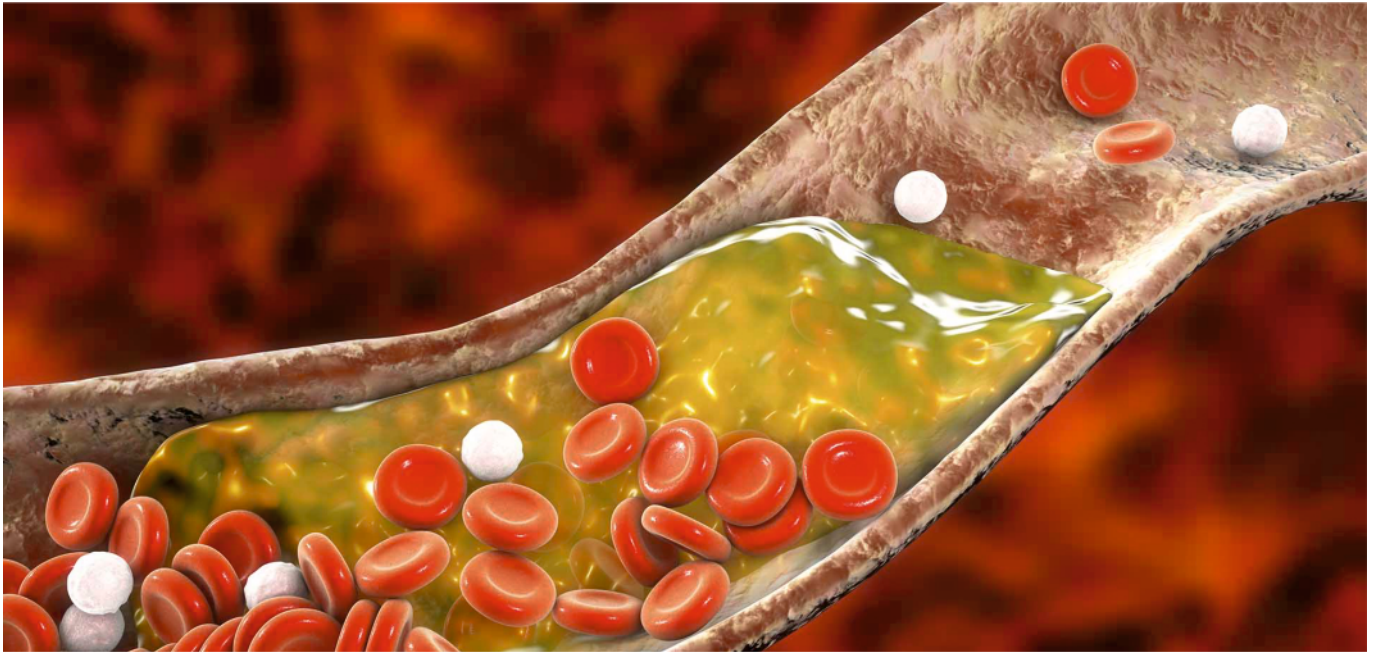
- Cancer is Preponed duplication of the cell before it attains maturity.
- Because of early duplication, the cell membrane can not get its strength.
- If we strengthen the cell membrane the rate of duplication can be retarded which in turn will control the progression of malignancy.
- With its dedicated frequency, current, and voltage eMedica will strengthen the cell membrane thereby increasing the membrane stability which will dampen the progression of the disease.
- The reduction in dosage of anti- malignancy therapy and its side effects.

TESTING METHODS FOR DIABETES



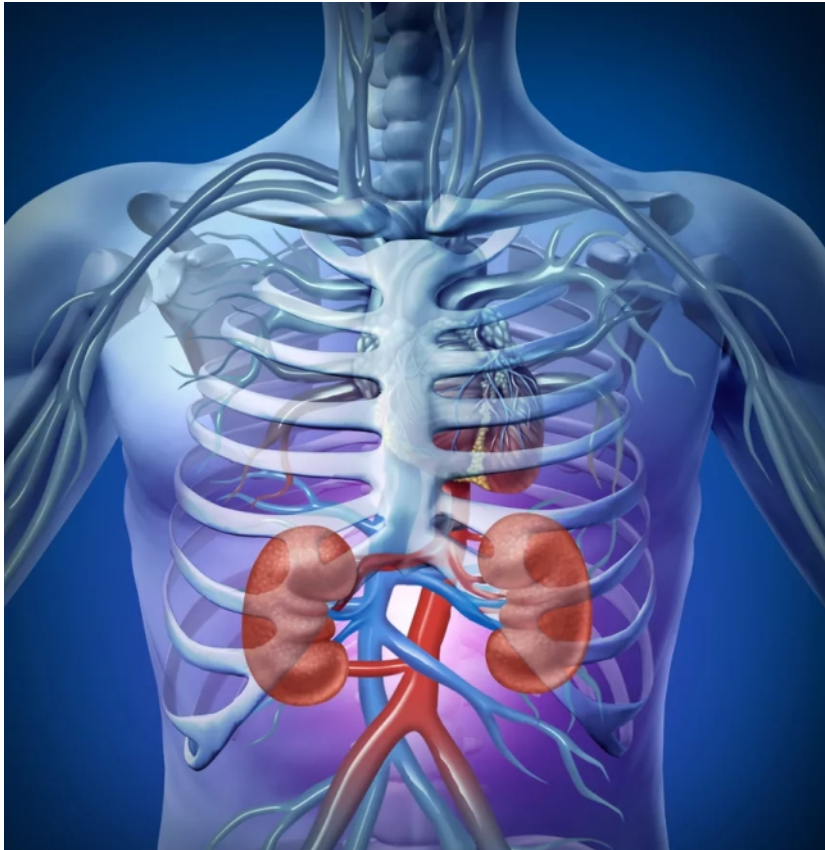
- Allow patient to use the device after two hours of any meal.
- The reason for two hours gap is because the Blood sugar levels get a spike immediately after a meal and it takes 2 hours to get stabilized.
- Check Blood sugar levels and serum insulin levels of the patient before using the device for a specific program for 60 minutes.
- Again test the blood for blood sugar levels and serum insulin levels after 60 minutes of resting period.
- The reason for 60 minutes resting period is, that when we consume any type of medicine, we allow the medicine to impact our blood within 60 minutes. The same way after taking a treatment from eMedica, frequencies and voltages take a minimum of 60 minutes to create an impact on the body.
- **Note: while testing the patient should not consume food or any kind of beverages, a patient needs to consume 1 glass of water before using the device.**

TESTING METHODS FOR CHOLESTEROL



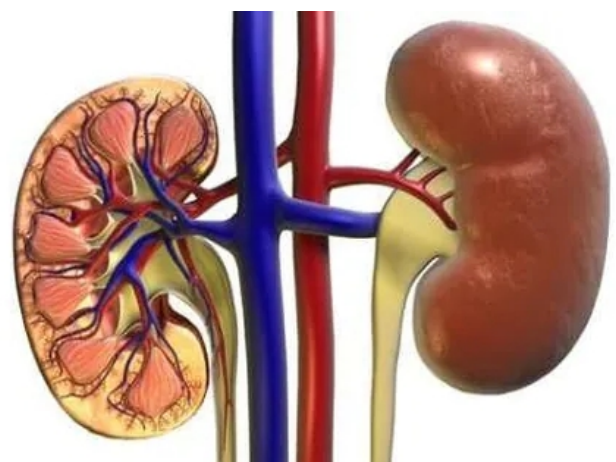
- Allow the patient to use the device two hours after any meal. The reason of two hours gap, is because the cholesterol levels gets high after any meal.
- Get a Lipid profile test done of the patient before use.
- Use the device for a specific program for 60 minutes.
- Again test the blood for its Lipid profile after 60 minutes of resting period after the use.
- The reason for 60 minutes resting period is required, because when we consume any type of medicine, we allow the medicine to impact our blood within 60 minutes. the same way after taking a treatment from eMedica, frequencies and voltages take a Minimum of 60 minutes to create an impact on the body.
- **Note: while testing the patient should not consume food or any kind of beverages, a patient needs to consume 1 glass of water before using the device.**

TESTING METHOD FOR KIDNEY



- Acute kidney failure occurs when your kidneys suddenly become inactive and unable to filter waste products and fluids which are build up in your body. That can cause swelling in your ankles, nausea, weakness, poor sleep, and shortness of breath. Without treatment, the damage can get worse and your kidneys may eventually stop working. That's serious, and it can be life-threatening.
- Any medicine Consumed for a longer period for any diseases such as Diabetes, Hypertension, Cholesterol, Thyroid, and many more can cause kidney failure.
- Chemical composition happening within the kidney leads up to the situation of Acute kidney failure.

- Take creatinine level & Urine output reports before using eMedica.
- Constantly Monitor urine level & creatinine level.
- Constantly Monitor medication level & ask to reduce the medication gradually with Dr's Advice.



WHY eMedica IS BETTER THAN LONGTERM MEDICATION



Medicine is a chemical that works on a disease and in turn harms other organs such as kidneys, liver, etc, and creates heart blockages.

Medication does not revive the body cells, eMedica revives and rejuvenates the body cells.

eMedica is a non-invasive product that has no side effects. A non-invasive way of healing is the best way to stay away from medication.

- Regular use of eMedica will keep you away from Cancer
- Regular use of eMedica will keep you away from Cardiac arrest
- eMedica Helps in Anti-Ageing
- eMedica is a family Device which helps to improve lifestyle problems.

MEDICINES

Harm your
kidneys

Age your
organs

Create heart
Blockage

A large, 3D-rendered gold percentage "85%" is shown on a white surface. The numbers are thick and have a metallic sheen, casting a soft shadow on the surface below them.

eMedica wellness device



- Improves your Immune system
- Helps to control your Blood sugar level
- Helps to control cholesterol
- Helps to Control blood Pressure
- Improves your blood circulation
- Increases your Ph. levels
- No side effects
- Non-invasive and Natural way



eMedica EMS & TENS. device



Our product based on EMS & TENS is based on foot vibrations Technology works as a Pain reliever, Never stimulation, Improve blood circulation in legs. Muscle Cramps, Arthritis, & Varicose veins.

Just 30 Minutes A Day On



eMedica wellness device



eMedica: Health in your hands
 Did you know body is electrified?
 Did you know your blood cells carry voltages?
 Did you know every disease works on its own optimal frequency?

We believe our bodies are made of flesh and blood, but everything on this planet, animals, plant and water are made of Atoms which emit and receive energy and operate on specific voltages and frequencies. All our tissues, cells & organs have their own unique electromagnetic field. Viruses, Bacteria also work on specific voltage and frequency. It has been proved that a normal cell voltage is 90 millivolts. Reduced voltage leads to various diseases.

Correcting cell voltage with specific voltage & frequencies would be an answer for many problems, which can heal naturally without using chemicals.

For example cell voltage below 50 millivolts leads up to various disease and cell voltage below 30 millivolts is cancer cell, same way healthy person have a frequencies of 62 megahertz to 72 megahertz. When the body

frequencies drops then we are prone to various diseases. For example, if frequency drops to 58 megahertz we are likely to have cold and flu, if it drops to 42 megahertz we are prone to cancer: Lower the frequencies the closer we are to death.

eMedica is an ingenious invention designed to provide dedicated voltages and frequencies. We have put together the collections of voltages and frequencies which could be an answer to all your health problems.

eMedica is a unique device which would monitor and cure on the same platform, which would also maintain the health records using cloud platform. We are in process of developing smart wearable device which would also monitor your all activities like sleep: calories burnt etc. eMedica monitors real-time health parameters like ECG, PPG, Spo2, Blood glucose level using IOT platform.

In case a disorder is recorded in the human body the device would obtain required program to stabilize the condition using artificial intelligence.

Benefits of eMedica

- Non Invasive way of healing.
- No side effects.
- No Chemicals.
- Proven Science.
- Any Medicine /Chemical used for a longer period intends for side effects such as kidney failure.
- One could reduce the medicine consumption by using eMedica in daily use for minimum 2hrs.
- "NABL" INDIAN Government certified device.
- "CE" Certified Device.
- "ROHS" Certified.



Do's

- ✔ Patient need to drink a glass of water before using the device for the better conductivity.
- ✔ Use tissue or handkerchief under the band to reduce sensitivity on hands.
- ✔ Continue medication and consultation as prescribed by your doctors.
- ✔ eMedica device needs to be used Minimum 2hrs everyday.
- ✔ Use as per the Dr's suggestion / eMedica health advisor.
- ✔ Use device after 2 hours after meals for testing Blood Sugar Level in Diabetic. In regular practice use it right after the meals.
- ✔ People above 60 Years, are advised to use the device maximum twice a day for 30 minutes each session.
- ✔ People with low body fat or with less protein diet are also advised to use it maximum twice a day for 30 minutes each session.

Don't's

- ✘ Children Below 8 Years.
- ✘ Patients with Pacemakers in the Heart.
- ✘ Pregnant women.
- ✘ Avoid to use Device on empty stomach especially for "Diabetes patients".

"Which are the patients who might not get benefited"

- ✘ A dead cells or a dead organs can't be revived.
- ✔ But before losing hopes the device should be tried at least for 15 days with a specific program before we consider the cell or organ is completely dead.



IMPORTANT NOTES

- We do not ask patient to quit the medicine.
- But patient can reduce the stress of medicine Gradually (by doctors advice) only if his body parameters are seen improved and monitored by their doctor after the use of eMedica.
- Sometimes we see a spike in blood sugar levels after usage of eMedica. Since we are burning fat in the blood the fat gets converted into energy (Sugar). So we notice a spike immediately after use but after 60 minutes of usage, we see a drop in sugar levels. So for some people, it takes 60 mins for the frequencies to impact your body after usage.
- If a patient has diabetes then we need an HbA1c(Hemoglobin A1C) test report before and after using eMedica regularly for 45 days.
- If a patient has cholesterol then we need an lipid profile test report before and after using eMedica for 2 Hours.
- If a patient has Thyroid then we need an TSH (thyroid-stimulating hormone) report before and after using eMedica regularly for 45 days.
- If a patient has Kidney failure then we need an creatinine level, urine output Test reports before and after using eMedica regularly for 45 days.
- If a patient has heart blockage issue then we need an Echocardiogram test report before and after using eMedica regularly for 45 days.
- The Salesperson should ask the patient whether they are suffering from Autoimmune disease, and if they do then we need to alter the eMedica device for them because if they will use the existing device with the immunity-boosting program while suffering from Autoimmune disease they will feel tremendous pain in their body, and the reason behind the body pain is because they are already high on immune and still trying to boost their immunity forcefully which will lead to body pain.
- While using the device the patient may experience loose motion, extra urination and sweating which indicates body detox.
- After using the device your body temperature may rise up to 2 degrees.
- While using the device the patient will feel relax and may feel sleepy.

BIOFEEDBACK

- Biofeedback machines calculate the body's impulses or frequencies and communicates these readings to the machine.
- The three most common types of biofeedback therapy are:
 - Thermal Biofeedback which measure skin temperature and blood temperature.
 - Electromyography which is used to measures muscle tension.
 - Neuro Feedback Which measures brain wave activity. (Brain waves. This type uses scalp sensors to monitor your brain waves using an electroencephalograph (EEG).
 - Breathing. (Oxygen saturation level).
 - Sweat gland activity.
 - Heart rate.
 - Pulse rate.
 - Biofeedback machines provide us with in-depth knowledge about what is happening in our body and it enables involuntary responses to measured. During biofeedback therapy, electrodes are generally attached to the patient's skin which in turn sends the in-depth information to the equipment.
 - Once the imbalances and stresses have been identified, the machine's program is selected from a vast database of vibrational biofeedback therapies to help return balance and relief the patient.

eMedica Monitoring Systems Incorporated



An electrocardiogram (ECG) is a test which measures the electrical activity of your heart to show whether or not it is working normally. An ECG records the heart's rhythm and activity on a moving strip of paper or a line on a screen.

A photo - plethysmogram (PPG) is an optically obtained plethysmogram, a volumetric measurement of an organ. Because blood flow to skin can be modulated by multiple other physiological systems, the PPG can also be used to monitor breathing, hypovolemia, and other circulatory conditions.

Spo2 stands for peripheral capillary oxygen saturation, an estimate of the amount of oxygen in the blood. Spo2 is an estimate of arterial oxygen saturation or SaO2, which refers to the amount of oxygenated hemoglobin in the blood. Hemoglobin is a protein that carries oxygen in the blood.

"eMedica" is capable of monitoring the Heart rate, Pulse rate, ECG, PPG, Spo2, Blood Pressure, Oxygen Saturation, Respiration Rate, Skin Temperature, Calories burnt, Stress level, duration of sleep etc.

More over if there is any discrepancy it would automatically run the concerned program (Therapy). "eMedica" has OTA software, IOT capabilities to monitor & upgrade the system/ software online/ remotely and mobile app control.

Artificial intelligence & OTA



In computer science Artificial intelligence (AI), sometime called as machine intelligence, is intelligence demonstrated by machines, in contrast to the natural intelligence displayed by humans and animals. Leading AI textbooks define the field as the study of "intelligent agents" any device that perceives its environment and takes action that maximize its chance of successfully achieving its goals. Colloquially, the term "artificial intelligence" is often used to describe machines (or computers) that mimic "cognitive" functions that humans associate with the human mind, such as "learning" and "problem solving" eMedica would obtain a desire program using its artificial intelligence in case it records a disorder through biofeedback from the device.

Over- the -Air programming (OTA) refers to various methods of distributing.

New software, configuration settings, and even updating encryption keys to device like cell phone, Medical device, set-top boxes or secure voice communication equipment (encrypted 2-way radios).

Manage and control secure Software or firmware updates for IOT device. When connecting device to the internet, software update capabilities help to ensure a secure IOT and enable an extended product life cycle.

"eMedica" can be integrated with the Hospital Health Record system and more insight can be drawn from the patient's historic and progressive records captured from time to time. This data could also be used to draw the intelligence and recommend the usage pattern of the device. This data can also be inserted by the doctor or any health care system or device.

eMedica STORAGE

QUANTUM SERVER FOR DATA STORAGE & CLOUD STORAGE



Cloud-based quantum computing is the innovation of quantum emulators, simulators or processors through the cloud increasingly cloud services are being looked on as the method for providing access to quantum processing. Quantum computers achieve their massive computing power by initiating quantum physics into processing power and when users are allowed access to these quantum-powered computers through the internet it is known as quantum computing within the cloud. eMedica would be sharing its data to the consumer, Doctors through cloud computing and storing its data in the quantum servers.



Comparison Chart

PARAMETERS	eMedica	TENSDEVICE	PEMF DEVICE	Stimulaton Pulse Massager
ENERGY	YES	Low energy	YES	Yes
FREQUENCY	YES-As per healing requirements variable	Fixed frequency	Pulsed electromagnetic field	Fixed frequency
VOLTAGES	YES- AC/DC, pulsed	Vibraton	NO- Electromagnetic field	Vibraton
HEALTH MONITORING SYSTEM	YES-ECG, PPG,O2, SPO2, PO2,Blood sugar, Body Temperature ,EMG, Calorie track , Blood Pressurse etc.	NO	NO	NO
IOT PLATFORM	YES eMedica can sense abnormalities & accordingly server can start required program using IoT. OTA updates, APP controlled, Cloud Storage, Online monitored.	NO	NO	NO
THERMAL HEALING	YES	NO	NO	NO
Electrons	Positive & Negative	NO	NO	NO
Artificial Intelligence	eMedica starts automatically on detecting disease. Also pre & post treatment records can be tracked.	NO	NO	NO
SIZE FLEXIBILITY	Yes- eMedica can be altered as per requirement i. e. wearable, bed size and portable	FIXED	FIXED	FIXED
INTEGRATION WITH OTHER EQUIPMENTS	Can be integrated with other health care equipment's, Hospital Servers, Mobile Phones	NO	NO	NO
Sound Stimulator	YES	NO	NO	NO



Certificates

Certificate of Compliance

Annex Directive (2011/65/EU) of the European Parliament and of the Council on the restriction of use of certain Hazardous Substances in Electrical and Electronic Equipment.

Certificate No. RCHS-SAPP-20-0700155

Manufacturer
 Name: SWATANTRA POWER PRIVATE LIMITED
 Address: 201, MANISH PLAZA, OPP. BHARAMA MAJESTIC, N.L.B.M RD, KONDHWA KURDI, PUNE-411048, MAHARASHTRA, INDIA
 Factory Address: GATE NO. 37, KHED SHIVAPUR, SASWAD ROAD, OFF PUNE SATARA HIGHWAY, KASURDI KHEDDIBADI, TAL. BHOR, PUNE 412205, MAHARASHTRA, INDIA
 Product: "MANUFACTURER OF ELECTRONIC MEDICAL DEVICE E-MEDICA"

This is to state that the above mentioned products in compliance with Annex Directive (2011/65/EU) of the European Parliament and Commission Decision 2005/618/EC on the restriction of use of certain Hazardous Substances (Lead (Pb), Mercury (Hg), Cadmium (Cd), Hexavalent Chromium (Cr(VI)), Polychlorinated Biphenyls (PCBs) and Polycyclic Aromatic Hydrocarbons (PAHs)) in Electrical and Electronic Equipment.

This certificate declares that the product type/model described above complies with the mentioned above European Standard(s).

Remarks: This certificate of compliance is based on the evaluation of a sample of the above mentioned products. It does not imply an endorsement of the mass production of the product. This certificate holder may use the certificate in connection with the test certificate body should be obtained revision of technical data, any modification or alterations made to the above mentioned product type(s), including design and manufacturer and/or extension to the existing scope of application.

The certificate is valid for three years if the company applies the technical construction file which has been cleared by the office. This certificate includes declaration of manufacturer.
 Certificate requires property of IEC, to whom it must be returned upon request. The certificate validity is conditioned by positive results or surveillance audits.

Validity of this certificate can be verified at www.gpsix.us

Date of Certification	07 th APRIL 2020
1 st Surveillance Due	06 th JUNE 2021
2 nd Surveillance Due	06 th JUNE 2022
Certificate Expiry (subject to the company maintaining its system to the required standard)	06 th JUNE 2023

Authorized Signatory

RoHS compliant

QA Certificate
 Issued by: RoHS India Pvt. Ltd. (RHSI)
 Only this office is authorized to issue and verify the certificate.
 The certificate is a registered System Process and hence cannot be copied.
 The certificate is a registered System Process and hence cannot be copied. The certificate is a registered System Process and hence cannot be copied. The certificate is a registered System Process and hence cannot be copied.

Certificate of Registration

This is to certify that

SWATANTRA POWER PRIVATE LIMITED
 201, MANISH PLAZA, OPP. BHARAMA MAJESTIC, N.L.B.M RD, KONDHWA KURDI, PUNE-411048, MAHARASHTRA, INDIA
 FACTORY ADDRESS: GATE NO. 37, KHED SHIVAPUR, SASWAD ROAD, OFF PUNE SATARA HIGHWAY, KASURDI KHEDDIBADI, TAL. BHOR, PUNE 412205, MAHARASHTRA, INDIA

has been independently assessed by QVA and is compliant with the requirement of the standard

ISO 13485:2016
Quality Management System For Medical Devices

For the following scope of activities

"MANUFACTURER OF ELECTRONIC DEVICE TO MEDICAL DEVICE E-MEDICA"

Certificate Number: QMS-SAPP-20-0700156

Verify this certificate visit at www.gpsix.us

Date of Certification	07 th April 2020
Issuance Date	07 th April 2020
1st Surveillance Due	06 th April 2021
2nd Surveillance Due	06 th April 2022
Re-Certificate Due	06 th April 2023

Authorized Signatory

QA Certificate
 Issued by: RoHS India Pvt. Ltd. (RHSI)
 Only this office is authorized to issue and verify the certificate.
 The certificate is a registered System Process and hence cannot be copied.
 The certificate is a registered System Process and hence cannot be copied. The certificate is a registered System Process and hence cannot be copied. The certificate is a registered System Process and hence cannot be copied.

Certificate of Compliance

We hereby declare that the technical file of product complies with the requirement of directives 2006/95/EC on LVD

Manufacturer
 Name: SWATANTRA POWER PRIVATE LIMITED
 Address: 201, MANISH PLAZA, OPP. BHARAMA MAJESTIC, N.L.B.M RD, KONDHWA KURDI, PUNE-411048, MAHARASHTRA, INDIA
 Factory Address: GATE NO. 37, KHED SHIVAPUR, SASWAD ROAD, OFF PUNE SATARA HIGHWAY, KASURDI KHEDDIBADI, TAL. BHOR, PUNE 412205, MAHARASHTRA, INDIA
 Product: "MANUFACTURER OF ELECTRONIC MEDICAL DEVICE E-MEDICA"

Complies with the requirements applicable to it

The Certification body has performed an audit of the above product quality system covering the design, manufacture and final inspection of the certified product. The quality system has been assessed, approved and is subject to continuous surveillance according to the above 2006/95/EC on LVD.

This certificate is issued under the following conditions:
 It applies only to the quality system maintained in the manufacture of above referenced models and it does not substitute the design or type examination procedures, if required.
 1. The certificate remains valid until the manufacturing conditions or the quality systems are changed.
 2. The certificate validity is conditioned by positive results or surveillance audits.
 3. After fulfilling the relevant CE legislation, the manufacturer shall affix to each device, of the above referenced models.
 4. The CE mark as shown above can be used, under the responsibility of the manufacturer, after completion of an EC Declaration of conformity and compliance with all relevant CE Directives. The statement is based on a single evaluation of one sample of above mentioned product. It does not imply an assessment of the whole production.

Certificate No. CE-SAPP-20-0700154

Certificate can be verified at www.gpsix.us

Date of Certification	07 th JULY 2020
1 st Surveillance Due	06 th JULY 2021
2 nd Surveillance Due	06 th JULY 2022
Certificate Expiry (subject to the company maintaining its system to the required standard)	06 th JULY 2023

Authorized Signatory

CE

QA Certificate
 Issued by: RoHS India Pvt. Ltd. (RHSI)
 Only this office is authorized to issue and verify the certificate.
 The certificate is a registered System Process and hence cannot be copied.
 The certificate is a registered System Process and hence cannot be copied. The certificate is a registered System Process and hence cannot be copied. The certificate is a registered System Process and hence cannot be copied.

HI PHYSIX testing & calibration laboratory
HI PHYSIX LABORATORY INDIA PVT. LTD
 B-32/1/2, MIDC, Ranjangaon, Pune, Maharashtra
 info@hiphysix.com, infohindia@gmail.com
 Phone : 02138 - 232901, 232902, 232903
 CIN : U74120DL2009PTC194754
 Mobile 1 : +91 7768005400
 Mobile 2 : +91 7768005411
 Mobile 3 : +91 7768005422

Page No. 1 of 10

TEST REPORT

TEST REPORT AS PER :- IS 13450 (Part 1) IEC 60601-1 SRF No: 21040014

Name & Address of Customer:	ULR No.: TC510021000000450F Discipline: Electrical Group: Safety Testing Facility Test Report No: HPL/Tes/2104001401 Date of Issue: 04/05/2021 Customer Ref. & Date : 09/04/2021
Date of Sample Receipt:	09/04/2021
Start of Test Date:	09/04/2021
End of Test Date:	30/04/2021

PART A - PARTICULARS OF THE SAMPLE SUBMITTED

Sample description	e-Medica (Wellness Device)
Grade/ variety/ type/ class/ size etc.	e-Medica (Wellness Device)
Declared values, if any	e-Medica (Wellness Device):- Input Rating: 19.0Vdc, 1.0A AC/DC Adapter:- Input Rating: 100-240Vac, 50/60Hz,0.3A Output Rating: 19.0Vdc,1.0A
Code no., BIS seal and IO's sign, if any	Nil
Batch no., date of manufacture and Brand name	Model No. e-Medica (Wellness Device) Brand Name: e-Medica
Quantity	01
Condition of the sample	Good
Reference specification (s)	IS 13450 (Part 1) IEC 60601-1 (Tests have been carried out as per customer request)
Environmental conditions	Temperature (25±5)°C & Relative humidity <70%
Statement of Conformity	N/A
Decision Rule	N/A

PART B - SUPPLEMENTARY INFORMATION

- Deviations from the test methods as per relevant specifications' work instructions, if any;
- Details of the drawings, graphs, tables, sketches or photographs as referred in the test report, if any: ANNEXURE A attached
- Testing procedure according to work instruction: HPL/D3/Test-Medical/W1-01 to 07
- The Management System is maintained in accordance with IS/ISO/IEC 17025:2017 and testing Standards/ Instruments are traceable to National/ International Standards.

Notes: i) This report is not to be reproduced wholly or in part without our special permission in writing.
 ii) This report refers only to the particular sample detailed above.
 iii) The results reported in this certificate are valid at the time of and under the stipulated conditions of measurement.

Tested by: [Signature] Checked by: [Signature] Approved by: [Signature]

Form No: HPL/04/11/2021
www.hiphysix.com
 Registered Office : B-9/51, Sector-18, Rohini, Delhi - 110089.

ADMH
 COMMUNITY PLATFORM FOR HEALTHCARE PROFESSIONALS

Presents

MAHARASHTRA HEALTHCARE EXCELLENCE SUMMIT & AWARDS 2021

CERTIFICATE OF RECOGNITION

Healthcare Innovation Award – Corporates

AWARDED TO

eMedica

Rohera Inc.(E Medica)

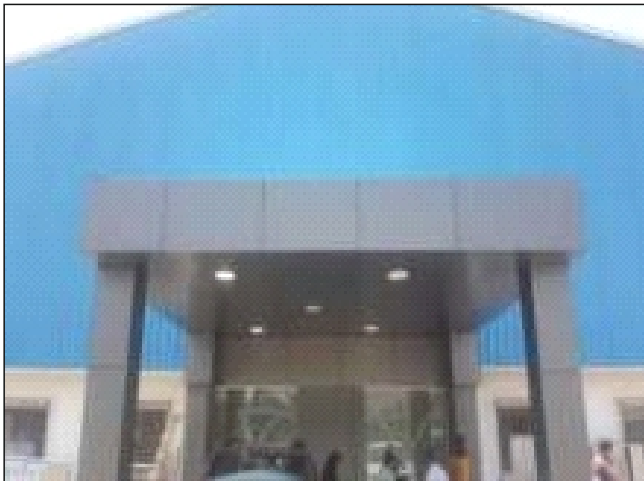
THIS AWARD IS TO RECOGNISE & HONOUR YOUR EXEMPLARY WORK IN THE FIELD OF HEALTHCARE, HELD ON 28TH JULY 2021

An Initiative of

InnoServ
www.innoserv.group

Mr. Rahul Jain
 MD, InnoServ Group
 Director, ADMH

Few pictures of awards receiving and manufactory setup



eMedica demonstrated to doctors



eMedica IN USE BY VVIP's PROFILE





Patent by : Hemant Karamchand Rohera
755 Hank Aaron, DrSE, Atlanta, GA, 30315, USA
Website: emedica.in

Follow us - [eMedicadevice](https://www.facebook.com/emedicadevice)

